



# Returning to Latvia



---

## Returning to Latvia

This document provides information and details of organisations which may be useful if you are facing removal or deportation to Latvia.

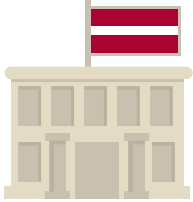
While every care is taken to ensure that the information is correct this does not constitute a guarantee that the organisations will provide the services listed.

---

## Your Embassy in the UK

### Embassy of the Republic of Latvia

45 Nottingham Place, London W1U 5LY  
**Tel:** 020 7312 0041 **Fax:** 020 7312 0042  
**www.mfa.gov.lv/london**



### Consular Section

Grove House, 248A Marylebone Road, London, NW1 6JZ  
**Tel:** 020 772 59 212 **Fax:** 020 7312 0042  
**Email:** consulate.uk@mfa.gov.lv

---

## Travel documents

You can be removed from the UK to Latvia if you have a valid Latvian passport or national identity card. If you do not have either of these then an application for an Emergency Travel Document (ETD) will need to be made. In addition to completing two forms, one in Latvian and one in English, you will need to supply six passport photographs (which must not be separated) and any supporting documentation if possible including any expired passport, identity card, Latvian driving license or any other evidence of Latvian nationality. While the Latvian consulate may be able to assist with obtaining some legal documents from Latvia there is a fee for this service.



A full UK birth certificate must be included for any UK Born children and this must be 'legalised' prior to submission, which means it must be submitted to the Legalisation team in the Foreign and Commonwealth Office. To do this, you will need to fill out the relevant form and send it with your document(s) and payment to:

By post from the UK:

### Legalisation Office

Foreign and Commonwealth Office  
PO Box 6255, Milton Keynes, MK10 1XX

or

Sending your documents from abroad or by courier from the UK Legalisation Office

### Foreign and Commonwealth Office

Hanslope Park, Hanslope, Milton Keynes, MK19 7BH

For further information check: **www.gov.uk/get-document-legalised**, or contact them on the details below:

**Tel:** 03700 00 22 44 between 12pm and 4pm, Monday to Friday

**Email:** legalisationenquiries@fco.gsi.gov.uk

---

## Return

If you are willing to return and want to ensure that you are returned to Latvia as soon as possible you can:

- Contact your caseworker at the Home Office to say that you are willing to return;
- Make every effort to find supporting documentation for issuing of travel documents;
- Make contact with the Latvian Embassy to begin the process of obtaining a travel document.





You may find it useful to read the information below to begin preparing for your return.



## Documentation in Latvia

While there is a Latvian national identity card, known as Personas apliecība, it is not mandatory to hold one. Any Latvian citizen needs to have either an identity card or a passport but both are equally acceptable for most purposes.

At present, the fee for an identity card is about half the fee for a passport, but whereas an identity card is valid for 5 years, a passport for an adult would usually be valid for 10 years.

An identity card can be obtained from any regional division of the Office of Citizenship and Migration Affairs. For further information contact details are:

### **Pilsonības un migrācijas lietu pārvaldē**

Ciekurkalna 1. līnija 1, k-3, LV-1026, Rīga, Latvija

**Tel:** +371 675 88675

**Email:** [pmlp@pmlp.gov.lv](mailto:pmlp@pmlp.gov.lv)

**[www.pmlp.gov.lv/lv](http://www.pmlp.gov.lv/lv)**



## Accommodation

Latvia has a large supply of social housing which is managed by either central or local government. Local authorities have an obligation to provide housing assistance for a number of groups including families, the elderly and people with disabilities.

Local authorities also provide a range of other services to homeless people including accommodation in large shelters (including accommodation for single men and women and for families with children), and assistance with transport and other costs, although exact provision varies from region to region.

The Police may be able to assist if you are facing homelessness when you return to Latvia. You can call ahead and arrange for the Police to meet you at Riga airport. They will process you as though you were a rough sleeper in Latvia, that is by taking you to the nearest police station for assessment. People who are deemed to have a genuine reason for rough sleeping are transferred to a night shelter.

Police can also carry out enquiries to see where you last lived in Latvia and, if you still have family there, can assist you to return to the family home. If you have no family or they will not assist you, Police will take you to one of the district night shelters where you will receive food and accommodation.



## Health

Latvia established a National Health Service in 2011. This means that there is a universal health service, but most services are subject to a flat rate charge for access. A Social Safety Net Strategy has been implemented to ensure health access is possible for very low income families. There are also no charges for services for children, pregnant women, emergency services and services for people with certain listed conditions.

Access to health services is through registration with a GP

It is possible to get medical advice out of hours from a telephone advice line set up by the Latvian Ministry of Health:

### **General practitioner consultation**

**Tel:** 66016001

**Email:** [medkonsultacija@gmail.com](mailto:medkonsultacija@gmail.com)

For further information about access to health services you can contact the Latvian National Health Service:

### **National Health Service**

31 Cēsu Street (6th entrance), Rīga, Latvia, LV-1012

**Free information line:** +37 1 80001234 **Fax:** +371 67043701

**Email:** [nvd@vmnvd.gov.lv](mailto:nvd@vmnvd.gov.lv)

**[www.vmnvd.gov.lv](http://www.vmnvd.gov.lv)**



---

## Emergency support



Welfare benefits are not available on an individual basis. When a person returns to their family the head of household makes an application to Social Services on the basis of additional household costs. In order to receive unemployment benefit, the applicant (head of the household) must be registered as unemployed with the State Employment Agency (NVA); s/he must be socially insured for at least one year and have paid contributions for at least nine months during the last 12 months before registering as unemployed.

In order to receive unemployment benefit after the registration as an unemployed person with the State Employment Agency (NVA), the unemployed person must apply to the State Social Insurance Agency (VSAA) together with the documents evidencing the length of his or her insurance record (work record card, certificates, work contracts and documents attesting to the ending of the work contract), if the State Social Insurance Agency does not have information about the length of person's insurance record.

### State Social Insurance Agency

Valsts Sociālās Apdrošināšanas Aģentūra, 70a Lacplesa Str., Rīga, LV-1011 Latvia

**Tel:** +371 6701 18 38 **Fax:** +371 6701 18 13 **Email:** vsaa@vsaa.lv

**www.vsaa.lv**

Individuals without family are accommodated in Social Services night shelters and are therefore not entitled to financial assistance.

People who have worked in the UK who would be eligible if in the UK for a contributions based benefit through payment of sufficient national insurance contributions may be able to access that benefit in Latvia. To find out more you can contact the Exportability Team

### Exportability Team

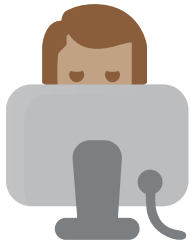
Room C216, Pension, Disability and Carers Service, Warbreck House,  
Warbreck Hill Road, Blackpool, FY2 0YE

**Tel:** +44 (0)125 333 1044 Monday to Friday, 8am to 6pm

Many cities have soup kitchens and clothing projects run by charities such as Red Cross and Salvation Army. For further details see the directory below.

---

## Employment, education and training



Latvia provides free, compulsory education to children up to the age of 15.

All Latvian citizens have the right to study in a higher educational institution, if they possess a high school certificate. There are no age restrictions for acquiring higher education.

The State Employment Agency (NVA) is a government agency whose role is to help unemployed people into work. Jobseekers who are registered as unemployed can access employment support, vocational training or advice and support on starting your own business are available from the NVA. Job vacancies are advertised in the NVA online database and you can also upload your CV.

### Nodarbinātības valsts aģentūra

K.Valdemāra iela 38, Rīga, LV-1010 Latvia

**Tel:** +371 67021706 **Freephone tel:** 8007700 **Fax:** +37 167021806

**Email:** nva@nva.gov.lv

**www.nva.gov.lv**

To apply for jobs many firms accept a CV and covering letter, so it may be worth applying on spec to firms where you are interested in working.

Many vacancies are advertised online. Below is a small sample of some of the sites available. This does not constitute a recommendation for their services and other services are available:

CV Online - Latvia: **www.cv.lv/english**

Dienas Bizness: **www.db.lv**

Latvijas Avīce: **www.la.lv**

Following the creation of the European Higher Education Area (EHEA), UK qualifications should be recognised by Latvian employers. If a potential employer does not recognise UK qualifications you may be able to get qualifications accredited through the British Council. You will need to provide the original certificate.

### British Council

**Email:** mail@britishcouncil.lv



---

## Directory

---



### AGIHAS – People living with HIV/AIDS Support Group

3 Linezera street, Riga, LV-1006, Latvia

**Tel:** +371 20207737

**Email:** agihas@agihas.lv

**www.agihas.apvienibahiv.lv/index.php?lang=1282**

Advocacy, advice, counselling and support for people living with HIV/AIDS.

---

### Blue Cross Shelter

Maskava Street 336, Riga, Latvia

Emergency accommodation for men only.

---

### Caritas Latvia

Katolu iela 14, LV 1003 Riga, Latvia

**Tel:** +371 29 55 21 02

**Email:** info@caritas.lv

**www.caritaslatvija.lv**

A Catholic agency running a range of services including working with migrants and provision of food to people in need.

---

### DIA+LOGS

Dzirnavu Street 135, Riga, LV-1050, Latvia

**Tel:** +371 67 24 31 01 **Fax:** +371 67243101

**Email:** dialogs@diacentrs.lv

**www.diacentrs.lv**

Drop-in centre and support group for people living with HIV/AIDS, drug users, sex workers and gay men. Services include counselling, specialist consultations, needle exchange, nutritional advice, education and support.

---

### Hope

Galones iela35/3, Riga, Latvia

**Tel:** +371 67105075

**Email:** Vlada.Larionova@riga.lv

Organisation providing accommodation, help to find work, advice and information. Clients can also be helped with referral into detox and rehab and other social services. Clients need id to access services.

---

### LatAISS Ltd

Bebru Street 16, Riga, Latvia

Emergency accommodation for men only.

---

### Latvian Red Cross

Sharlotes St. 1d, Riga, LV-1001, Latvia

**Tel:** +371 67 33 66 51

**Fax:** +371 67 33 66 52

**Email:** sekretariat@redcross.lv

**www.redcross.lv**

Non-governmental organisation offering family tracing service and social support.

---

### Patvērums Drošā Māja (Safe Haven House)

Lāčplēša iela 75-9/10, Riga, LV-1011, Latvia

**Tel:** +371 67 89 83 43 or +371 28 61 21 20

**Email:** drosa.maja@apollo.lv

**www.patverums-dm.lv**



Safe Haven House provides support services for trafficked persons, legal immigrants, including asylum seekers, refugees and persons with subsidiary protection. This support includes training and voluntary work, as well as practical assistance.

---

### **Riga Shelter for Men**

Maskava Street 208, Riga, Latvia

Emergency accommodation for men only.

---

### **Riga Shelter for Women**

Eizenijas iela 1, Riga, Latvia

Emergency accommodation for women only.

---

### **Salvation Army - Sweden & Latvia**

Box 5090, SE 102 42, Stockholm, Sweden

**Tel:** +46 (08) 562 282 00 **Fax:** +46 (08) 562 283 91

**Email:** fralsningsarmen@fralsningsarmen.se

**www.fralsningsarmen.se**

Bruninieku 10a, LV-1001, Riga

**Tel:** +371 67310036

9.30-17.00

**Email:** info@pestisanasarmija.lv

Salvation Army projects for Latvia are managed from Sweden. Provides social services for people in need.

---

### **Skalbes Society**

Kungu iela 34, Rīga, Latvia

**Tel:** +371 72 22 922 Hotline for crises open 24 hours: Lattelecom hotline: 67 22 29 22

Bites hotline: 27 72 22 92

**Email:** skalbes@skalbes.lv

**www.skalbes.lv**

Free psychological counselling available to Latvian residents.

---

### **Social Services - Karklu**

Karklu, 68 Jelgava, Latvia

**Tel:** +0371 30 630224

Social services, help to find work, advice and information. Will also link to detox and rehab services.

---

Praxis Community Projects works with vulnerable migrants including foreign national offenders providing advice, advocacy and casework on immigration, housing, welfare benefits.

---

## **Praxis Community Projects**

Pott Street, London E2 OEF

**Tel:** +44 (0)20 7729 7985 **Fax:** +44 (0)20 7729 0134

**Email:** advice@praxis.org.uk

**www.praxis.org.uk**

---